

# Denise Hartley-Wilkins

CFHRNZ, MCIPD, ICF ACC

+64 (0)21 137 1589

denise@shinepeople.co.nz



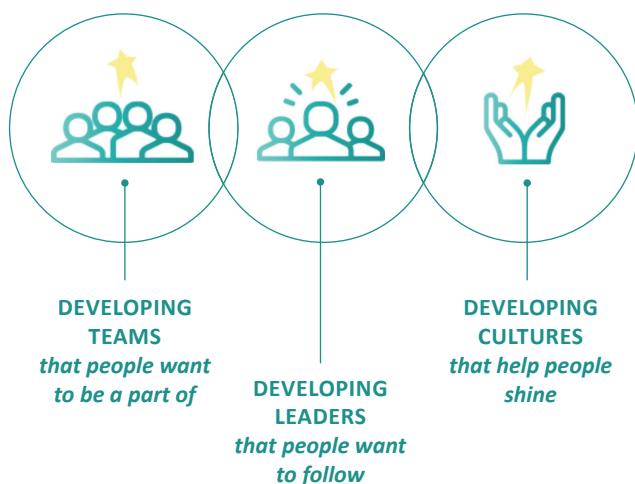
## PROFILE

*People and culture expert, dedicated to championing better workplaces and working lives for over 25 years.*

I believe you don't have great organisations, you have great workplaces. My mission is to support businesses across New Zealand to create standout workplace cultures that help their people shine. After all, exceptional teams deliver exceptional results.

Working globally in top-level management roles and at the coalface of businesses has given me the insight and real-world experience to make sustainable change.

## MY SPECIALISMS



## WHO I WORK WITH

- C-suite, senior leaders, middle managers, team leaders
- Teams: Senior leadership teams to frontline
- People transitioning into new leadership roles
- Leaders managing change or transitions
- High-potential talent highlighted for progression

## QUALIFICATIONS & ACCREDITATIONS

**Executive and Organisational Coach Certificate**  
*Coaching Pacific*

**Systemic Team Coach Practitioner**  
*Global Team Coaching Institute*

**Team Coach (ITCA) Practitioner**  
*EMCC Global*

**Emotional Culture Deck Silver Certified**  
*Riders and Elephants NZ*

**Lominger Leadership Architect**  
*Lominger International*

**MBTI Step I & II**  
*CPP Australia*

**Extended DISC**  
*HR Profiling Solutions, NZ*

**Neuro-Linguistic Programming (NLP) practitioner**  
*Lifetime Learning NZ*

**Postgraduate Diploma in HR Management**  
*Anglia University*

## MEMBERSHIPS



**International Coach Federation**  
Associate Certified Coach  
Transform 2020 V-Summit developer, panelist & facilitator  
View my profile <https://bit.ly/3c9kEZN>



**Human Resources Institute of New Zealand (HRNZ)**  
National President: 2019 – 2022  
Chartered Fellow: CFHRNZ



**Chartered Institute of Personnel and Development (UK)**  
Chartered Professional Member: MCIPD